



# FLUIDIC

## CONNECTIVITY SOLUTIONS

### FLUIDS, POWER AND DATA HYBRID CONNECTORS

Air compression up to 7 bars

Sterilizable up to 500 cycles

Up to 10,000 mating cycles, high shock and vibration resistance



#### MEDICAL | THERAPEUTIC | SURGICAL

Certified to **ISO 13485:2016** "Medical devices – Quality management systems – Requirements for regulatory purposes", Fischer Connectors manufactures quality products that are **safe and reliable for integration into medical devices**.

#### INSTRUMENTATION | TEST & MEASUREMENT

The helium and hydrogen sniffer **leak detector** from Pfeiffer Vacuum stands for high sensitivity ( $10^{-7}$  mbar l/s), accuracy and repeatability in industrial applications. It features **two Fischer Core hybrid connectors with 8 electrical contacts** and **1 fluidic tube** resisting high mating cycles.

*(Photo with Pfeiffer Vacuum's kind support)*



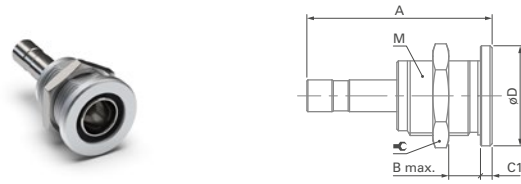
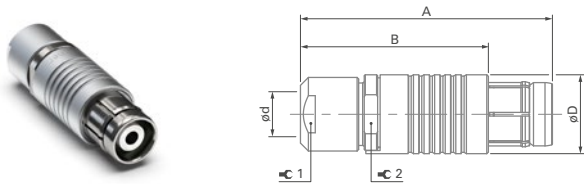
Part of Conexivity Group

# SINGLE F SIZE 104 LAYOUT A118

Fischer Core Series Brass  
1 single fluidic insert



## CONNECTOR DIMENSIONS in millimeters (mm)

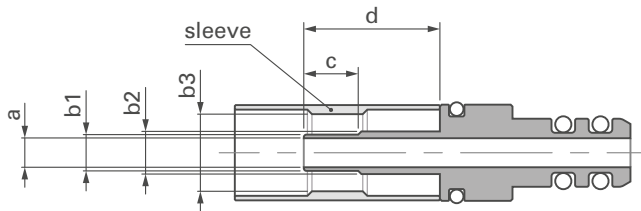


Part number	A	B	D	d max	⌀1	Torque 1 (Nm)	⌀2
S 104 A118	48	36	15	8.7	12	2.0	13

Part number	A	B max	C1	D	M	⌀	Torque (Nm)
D 104 A118	35	11	2.2	19	15x1	17	4.0

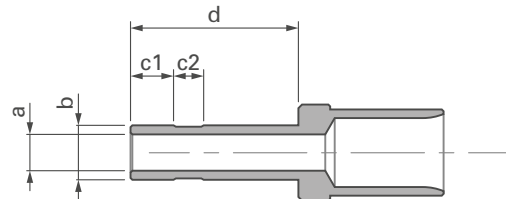
## FLUIDIC INSERT DIMENSIONS in millimeters (mm)

### PLUG – MALE INSERT AND SLEEVE



a	b1	b2	b3	c	d
3.2	4.0	4.7	8.5	6.0	15.0

### RECEPTACLE – FEMALE INSERT



a	b	c1	c2	d
4.0	6.0	5.0	2.8	18.5

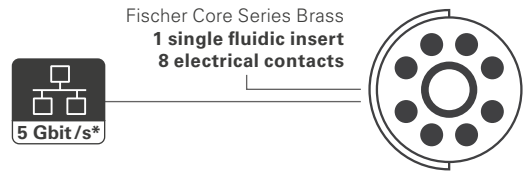
## FLUIDIC INSERT CHARACTERISTICS\*

Material	
Insert	Nickel plated brass (CuZn39Pb3)
O-ring	FPM (Viton®)

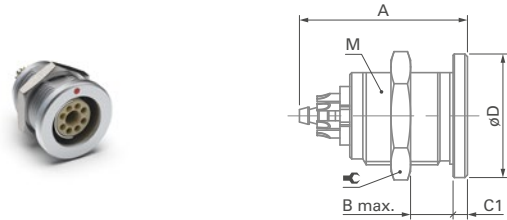
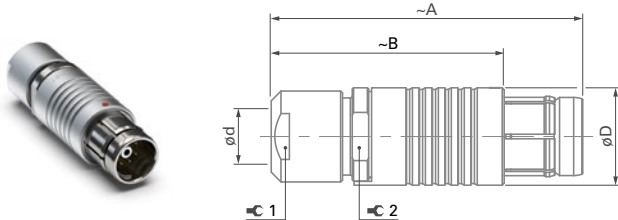
Mechanical	
Max pressure (bar)	7
Mating cycles	10,000

\* For additional connector characteristics, please refer to Technical Specifications, Volume 1, Fischer Core Series Brass.

# MIXED F8 SIZE 104 LAYOUT A106



## CONNECTOR DIMENSIONS in millimeters (mm)

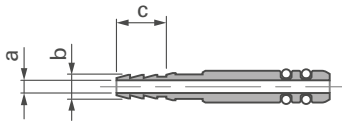


Part number	A	B	D	d max	⌀1	Torque 1 (Nm)	⌀2
S 104 A106-130+	50	38	15	8.7	12	2.0	13

Part number	A	B max	C1	D	M	⌀	Torque (Nm)
D 104 A106-130	26	11	2.2	19	15x1	17	4.0

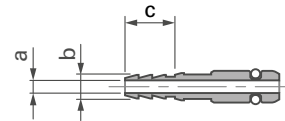
## FLUIDIC INSERT DIMENSIONS in millimeters (mm)

### PLUG – MALE INSERT



a	b	c
1.4	2.6	5.5

### RECEPTACLE – FEMALE INSERT



a	b	c
1.4	2.6	5.5

## FLUIDIC INSERT CHARACTERISTICS\*\*

Material	
Insert	Nickel plated brass (CuZn39Pb3)
O-ring	FPM (Viton®)

Mechanical	
Max pressure (bar)	7
Mating cycles	10,000

\*\*For additional connector characteristics, please refer to Technical Specifications, Volume 1, Fischer Core Series Brass.

## ELECTRICAL CHARACTERISTICS

Size and layout	Number of electrical contacts	Contact type	Insulating material	Contact ⌀ (mm)	Wire size (max ⌀ 0.79 mm)	Test voltage				Rated voltage r.m.s. (V)	Current (A)
						AC r.m.s.		DC			
						Contact to body	Contact to contact	Contact to body	Contact to contact		
104 A106	8	Solder	PEEK	0.9	AWG 21 [1] AWG 22 [7/30]	1.8	1.8	2.7	2.7	≤ 320	4.9

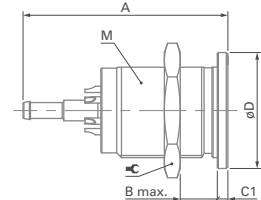
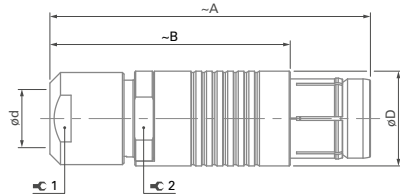
\*The 104 A106 hybrid configuration with 8 electrical contacts is compliant with Ethernet 5 Gbit/s data transmission (Ethernet 5GBASE-T IEEE standard 802.3bz-2016).

# MIXED F6 SIZE 105 LAYOUT A130

Fischer Core Series Brass  
1 single fluidic insert  
6 electrical contacts



## CONNECTOR DIMENSIONS in millimeters (mm)

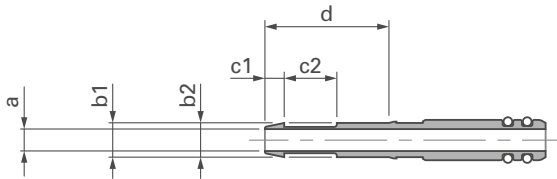


Part number	A	B	D	d max	⌀1	Torque 1 (Nm)	⌀2
S 105 A130-130+	62	47	18	10.7	15	3.5	16

Part number	A	B max	C1	D	M	⌀	Torque (Nm)
D 105 A130-130	39	15	2.0	22	18x1	22	6.0

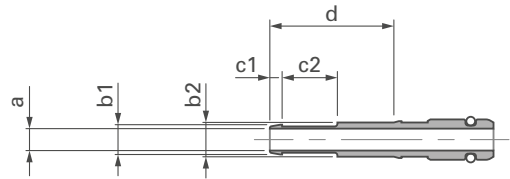
## FLUIDIC INSERT DIMENSIONS in millimeters (mm)

### PLUG – MALE INSERT



a	b1	b2	c1	c2	d
2.5	3.9	3.9	2.2	6	13.2

### RECEPTACLE – FEMALE INSERT



a	b1	b2	c1	c2	d
2.5	3.4	3.9	1.4	6.3	13.2

## FLUIDIC INSERT CHARACTERISTICS\*

Material	
Insert	Nickel plated brass (CuZn39Pb3)
O-ring	FPM (Viton®)

Mechanical	
Max pressure (bar)	7
Mating cycles	10,000

\* For additional connector characteristics, please refer to Technical Specifications, Volume 1, Fischer Core Series Brass.

## ELECTRICAL CHARACTERISTICS

Size and layout	Number of electrical contacts	Contact type	Insulating material	Contact ⌀ (mm)	Wire size (max ⌀ 0.79 mm)	Test voltage				Rated voltage r.m.s. (V)	Current (A)
						AC r.m.s.		DC			
						Contact to body	Contact to contact	Contact to body	Contact to contact		
105 A130	6	Solder	PEEK	0.9	AWG 21 [1] AWG 22 [7/30]	1.8	3.0	2.7	4.1	≤ 320	5.5

Explore high-performance connectivity solutions  
[fischerconnectors.com](http://fischerconnectors.com)

