



**User Guide**  
for  
**Positioner Tool**

**MiniMax™**  
Panel Mounted Receptacles  
with PCB Contacts

## Table of Contents

1	Introduction .....	2
2	Document History .....	2
3	Definitions and Acronyms .....	2
4	Tools Required .....	3
5	How to use the Positioner.....	4

### 1 Introduction

This document describes the use of the **Positioner Tool** intended to place the contact block of the MiniMax™ panel mounted receptacles in the rear position when soldering the printed circuit board.

It covers the following range of connector references:

- Panel mounted receptacles: **MR1xWxxx xxxx xxxP**

These positioner tools are available free of charge. Please contact your local sales representative.

### 2 Document History

Date	Revision #	Author	Controller	Modification description
07-Oct-2021	1.0	SKE	MRZ	New Document (for Size 06)
13-May-2022	1.1	SKE	MRZ	Extension to all Sizes (06, 08 and 10)

### 3 Definitions and Acronyms

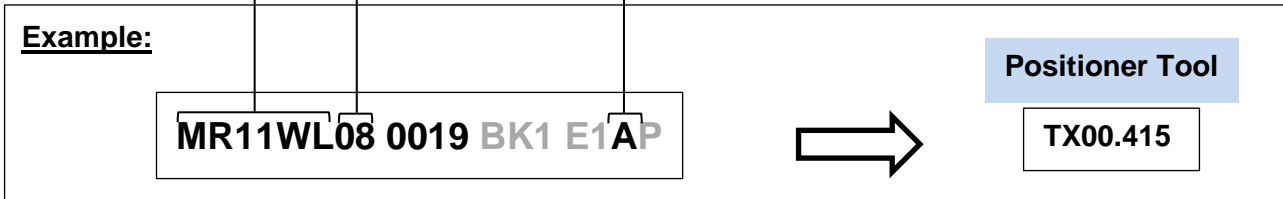
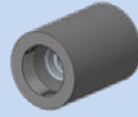
Text	Definition / Acronym
PCB	Printed Circuit Board

## 4 Tools Required

Tool selection:

**Table 1**

Body Style	Size	Polarity	Positioner Tool
			Fischer P/N
MR1xWx	06	A	TX00.413
		F	
		M	
	08	Any	TX00.415
	10	Any	TX00.416



## 5 How to use the Positioner

5.1 – Screw the Positioner	Process	Tools
<p><b>Picture</b></p> <p>Labels in diagram: Receptacle, Balls (3x), Grooves (3x), TX00.XXX</p>	<p>Only for push-pull locking (L) version: MR1xW<u>L</u>xx xxxx xxxx xxxP</p> <p>Align the grooves (3) of the Positioner with the balls of the Receptacle.</p> <hr/> <p>Slide the Positioner over the front of the Receptacle.</p> <p>Screw the Positioner on the Receptacle by hand and without applying significant torque until you reach the end stop.</p> <p>Once the contact block of the Receptacle is in correct position, the tip of the contact pins shall be approximately aligned with the tip of the ground pin.</p>	<p>Positioner Tool</p>

