



Instructions
for
Core Series

How to use SV connectors

1 Introduction

This document shows the correct use of SV connectors.

2 Document history

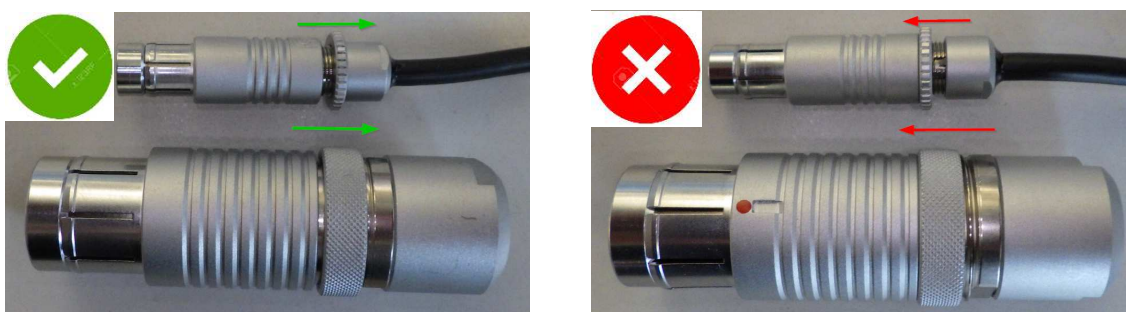
Date	Revision #	Author	Controller	Modification description
10.03.2020	1.0	DLZ	SKE	New Document

3 Definitions and Acronyms

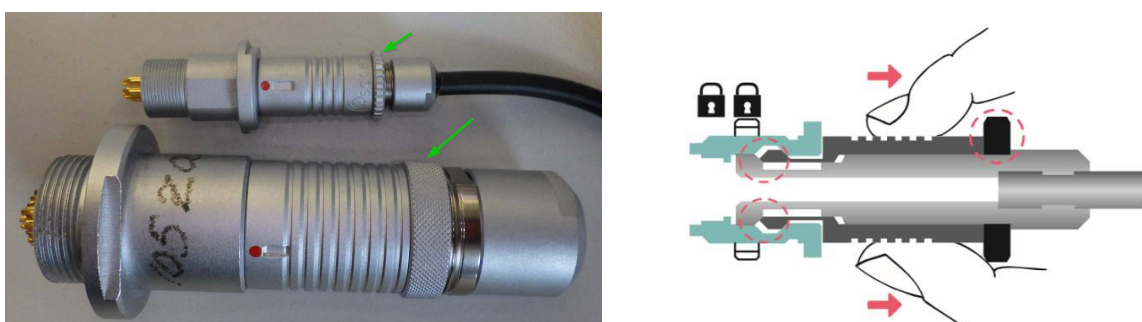
Text	Definition / Acronym
SV connector	Tamperproof plug with an integral safety locking ring to prevent unauthorized or unintentional release

4 How to use

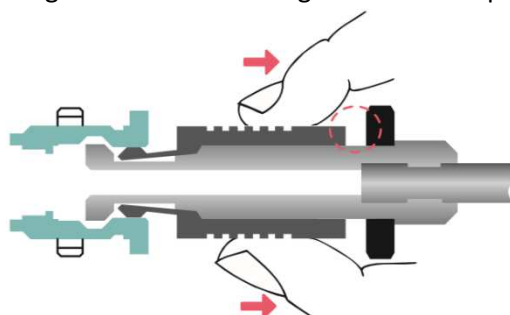
4.1. To mate the SV plug, make sure the knurled ring is unscrewed at the rear end of the plug:



4.2. To secure the locking, screw and tighten the knurled ring after mating the SV plug:



4.3. To unmate the SV plug, untighten the knurled ring to unlock and pull the outer sleeve of the plug:



Refer to Technical Specifications for more details