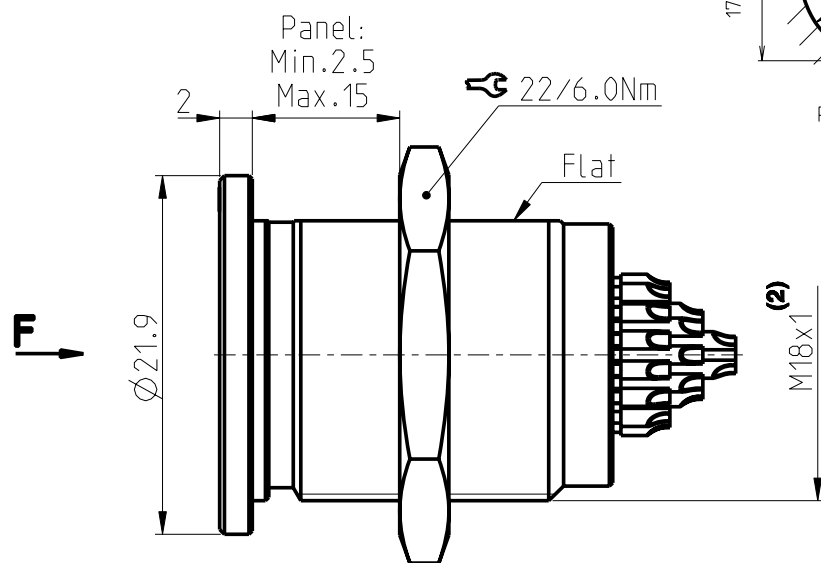
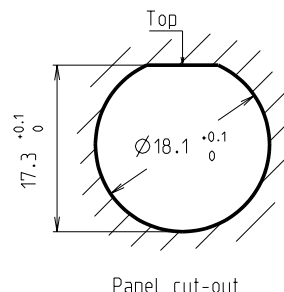
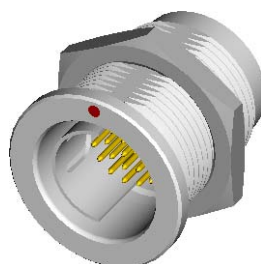


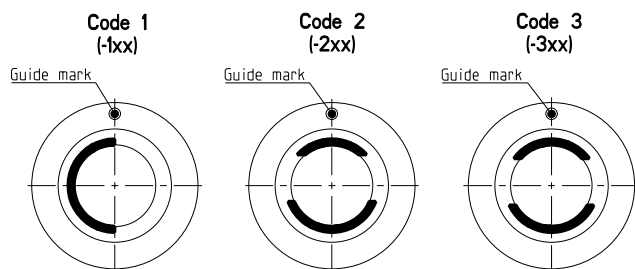
D 105 Multipole Receptacles

Contact polarity A

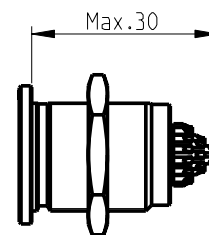
Contact polarity Z



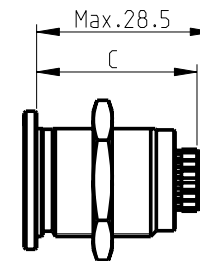
Keying codes (View from F)



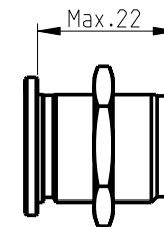
All dimensions see note 1)



Solder (-x30/-x40)



PCB (-x39/-x49)



Crimp (-x50/-x60)⁽³⁾

CONTACT CONFIGURATION	Contacts	Solder cup ϕ	C	PIN ϕ	Crimp cup ϕ
105 A Z 051	2	2.03	-	-	-
105 A Z 087	2	2.93	-	-	-
105 A Z 052	3	2.03	-	-	-
105 A Z 053	4	2.03	-	-	-

Pin layout / PCB hole pattern for polarity A - View from F ⁽⁴⁾

051

087

052

053

(5)

(5)

(5)

(5)

Polarity Z - View from F

(5)

(5)

(5)

(5)

All dimensions in mm

600494

Rev.

2

Pages

1/4

Notes :

- 1) All tolerances resulting from connector assembly are typically ± 0.3 mm
- 2) If receptacle is screwed directly into threaded hole, oversize thread by $+0.05$ mm
- 3) For optimum crimping refer to available crimping manual.

4) Recommended PCB hole dimensions may be adjusted to application

5) Please contact us.

Part number example : D 105 A102-130

fischer
CONNECTORS

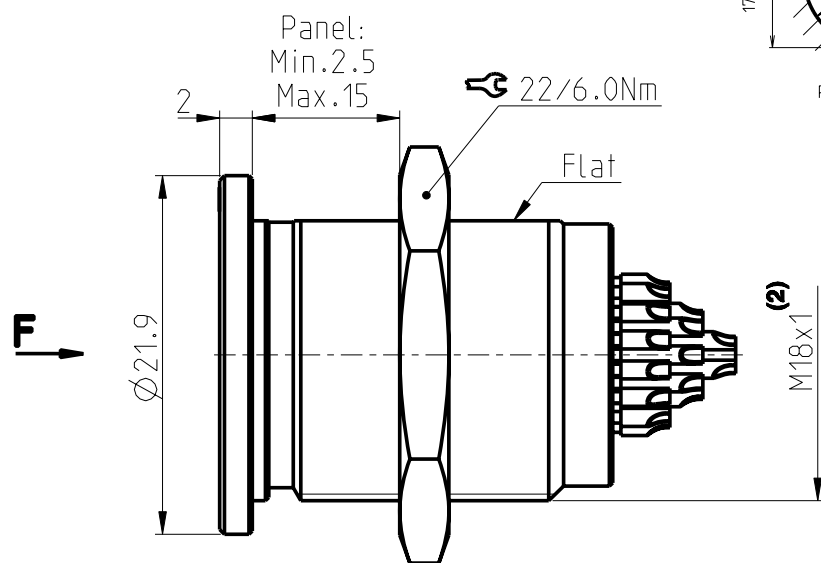
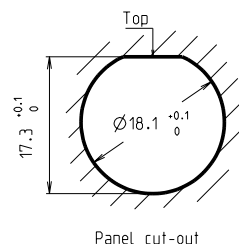
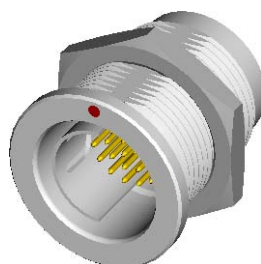
www.fischerconnectors.com

Information provided herein is believed to be accurate at time of publishing. Fischer Connectors reserves the right to make modifications on products for continuous improvement without prior notice.

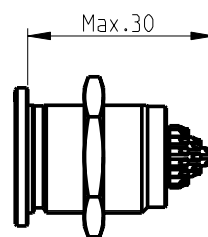
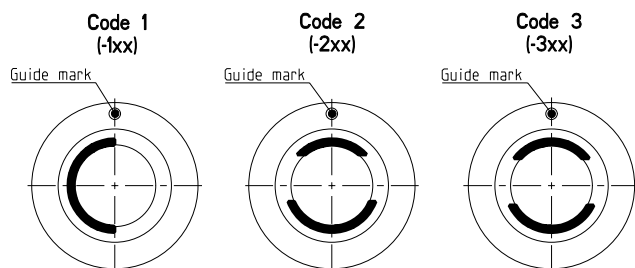
D 105 Multipole Receptacles

Contact polarity A

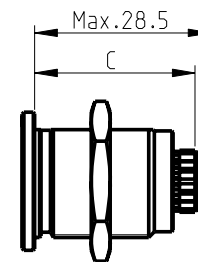
Contact polarity Z



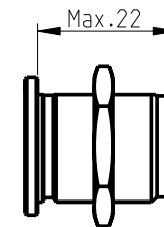
Keying codes (View from F)



Solder (-x30/-x40)



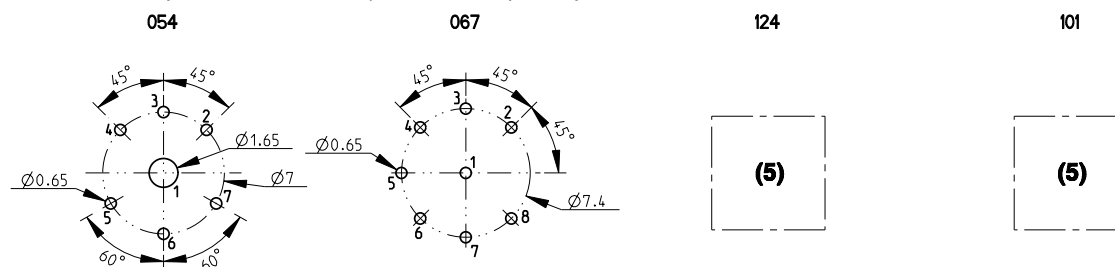
PCB (-x39/-x49)



Crimp (-x50/-x60)⁽³⁾

CONTACT CONFIGURATION		Contacts	Solder cup ϕ	C	PIN ϕ	Crimp cup ϕ
105	A	054	7	1.18/2.03	26	0.50/1.50
	Z			-	-	-
105	A	067	8	1.18	26	0.50
	Z			-	-	-
105	A	124	8	1.18/2.48	-	-
	Z			-	-	-
105	A	101	9	1.18/2.03	-	-
	Z			-	-	-

Pin layout / PCB hole pattern for polarity A - View from F ⁽⁴⁾



Polarity Z - View from F



All dimensions in mm

600494

Rev.

2

Pages

2/4

Notes :

- 1) All tolerances resulting from connector assembly are typically ± 0.3 mm
- 2) If receptacle is screwed directly into threaded hole, oversize thread by $+0.05$ mm
- 3) For optimum crimping refer to available crimping manual.

4) Recommended PCB hole dimensions may be adjusted to application

5) Please contact us.

Part number example : D 105 A102-130

fischer
CONNECTORS

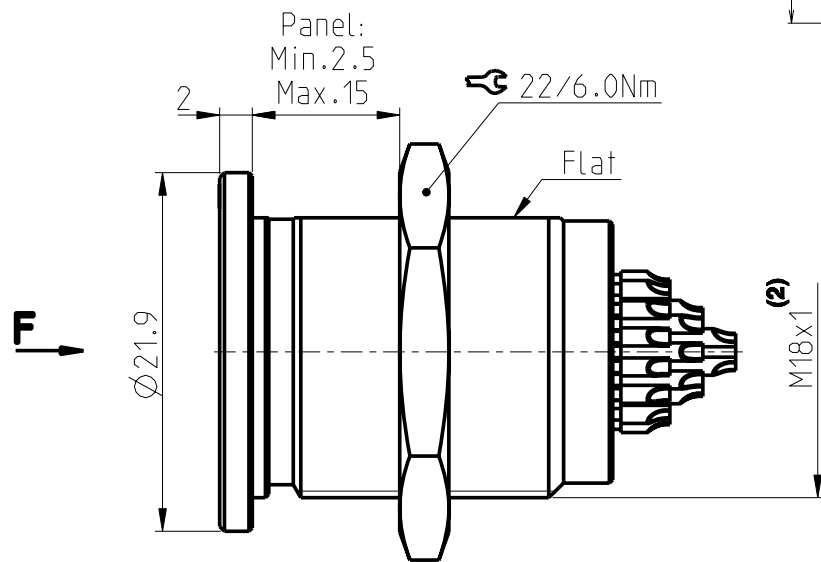
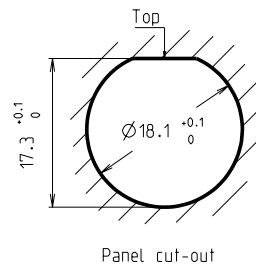
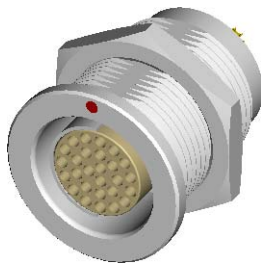
www.fischerconnectors.com

Information provided herein is believed to be accurate at time of publishing. Fischer Connectors reserves the right to make modifications on products for continuous improvement without prior notice.

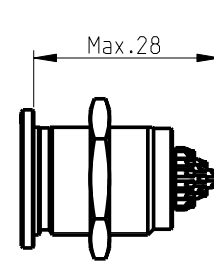
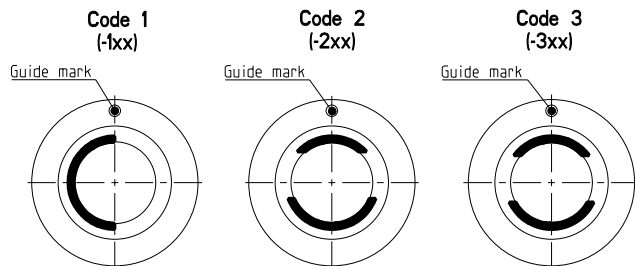
D 105 Multipole Receptacles

Contact polarity A

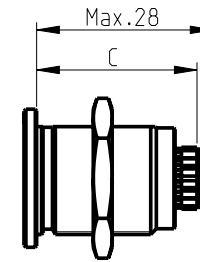
Contact polarity Z



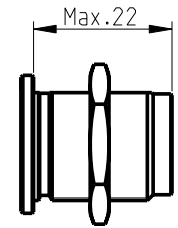
Keying codes (View from F)



Solder (-x30/-x40)



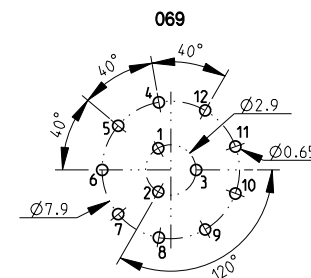
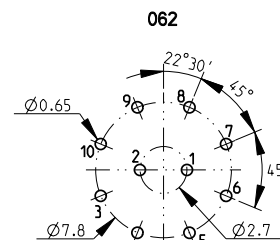
PCB (-x39/-x49)



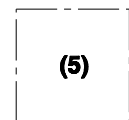
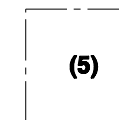
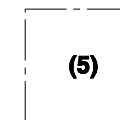
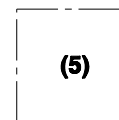
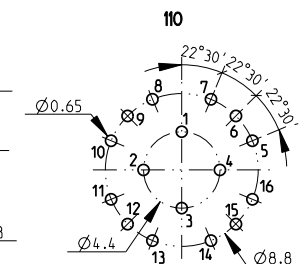
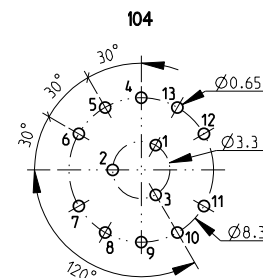
Crimp (-x50/-x60)⁽³⁾

CONTACT CONFIGURATION			Contacts	Solder cup \varnothing		C	PIN \varnothing		Crimp cup \varnothing
105	A Z	062	10	1.18		25.5 -	0.50 -		1.18
105	A Z	069	12	1.18		25.5 -	0.50 -		-
105	A Z	104	13	0.79/1.18		25.5 -	0.50 -		-
105	A Z	110	16	0.79/1.86		25.5 -	0.50 -		-

Pin layout / PCB hole pattern for polarity A - View from F ⁽⁴⁾



Polarity Z - View from F



All dimensions in mm

600494

Rev.	Pages
------	-------

2 3/4

Notes :

- 1) All tolerances resulting from connector assembly are typically $\pm 0.3\text{mm}$
- 2) If receptacle is screwed directly into threaded hole, oversize thread by $+0.05\text{mm}$
- 3) For optimum crimping refer to available crimping manual.

4) Recommended PCB hole dimensions may be adjusted to application

5) Please contact us.

Part number example : D 105 A102-130



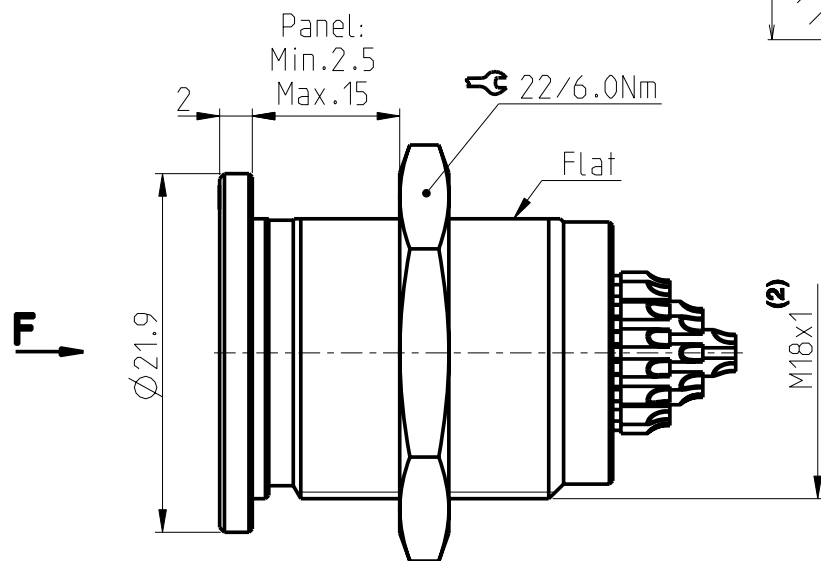
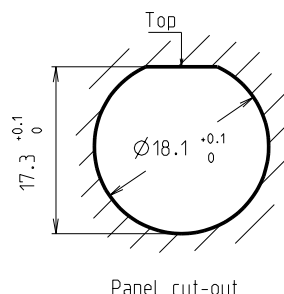
www.fischerconnectors.com

Information provided herein is believed to be accurate at time of publishing. Fischer Connectors reserves the right to make modifications on products for continuous improvement without prior notice.

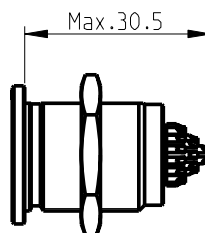
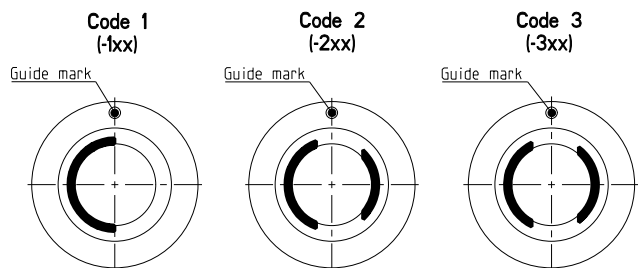
D 105 Multipole Receptacles

Contact polarity A

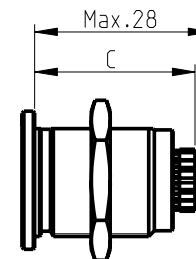
Contact polarity Z



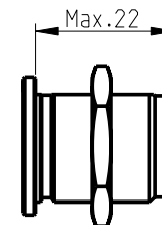
Keying codes (View from F)



Solder (-x30/-x40)



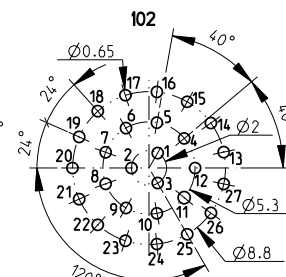
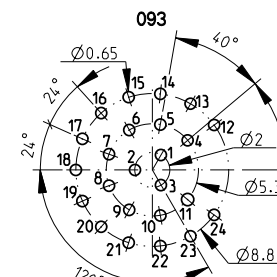
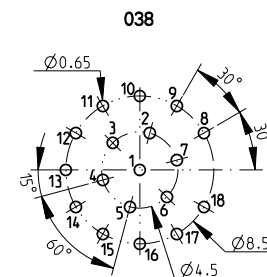
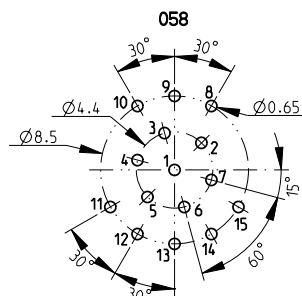
PCB (-x39/-x49)



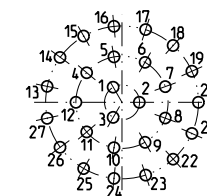
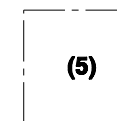
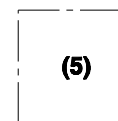
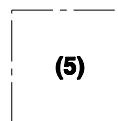
Crimp (-x50/-x60)⁽³⁾

CONTACT CONFIGURATION	Contacts	Solder cup ϕ	C	PIN ϕ	Crimp cup ϕ
105 A 058	15	0.79	25	0.50	0.80
105 A 038	18	0.79	25	0.50	0.80
105 A 093	24	0.79	25.5	0.50	-
105 A 102	27	0.79	25.5 25	0.50	0.60

Pin layout / PCB hole pattern for polarity A - View from F ⁽⁴⁾



Polarity Z - View from F



All dimensions in mm

600494

Rev.

2

Pages

4/4

Notes :

- 1) All tolerances resulting from connector assembly are typically ± 0.3 mm
- 2) If receptacle is screwed directly into threaded hole, oversize thread by $+0.05$ mm
- 3) For optimum crimping refer to available crimping manual.

4) Recommended PCB hole dimensions may be adjusted to application

5) Please contact us.

Part number example : D 105 A102-130

fischer
CONNECTORS

www.fischerconnectors.com

Information provided herein is believed to be accurate at time of publishing. Fischer Connectors reserves the right to make modifications on products for continuous improvement without prior notice.