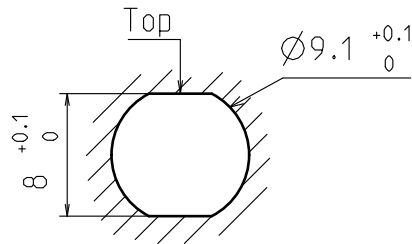
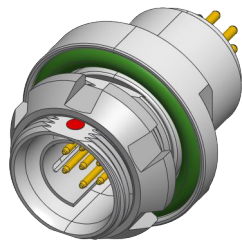
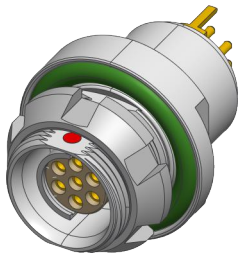


# DBPE/DBPU 102 Multipole Receptacles

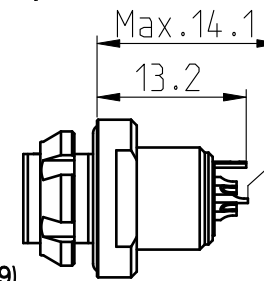
All dimensions see note 1)

Contact polarity A

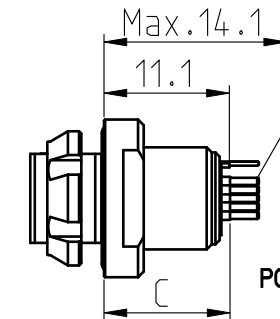
Contact polarity Z



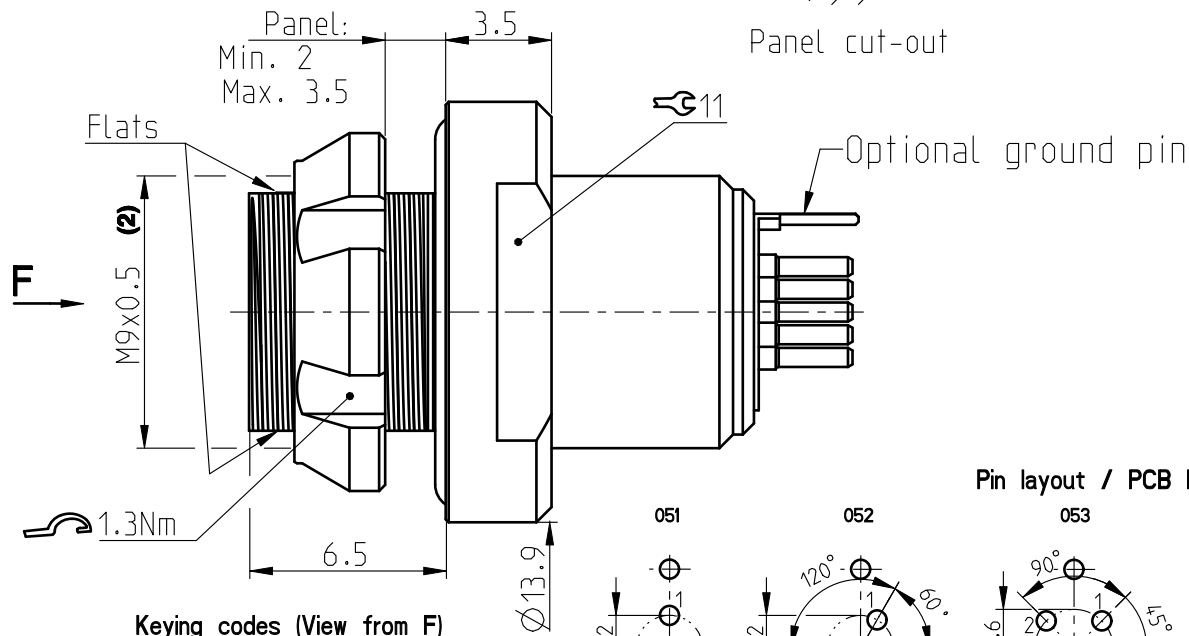
Panel cut-out



Solder (-x39/-x49)

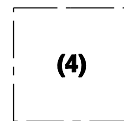
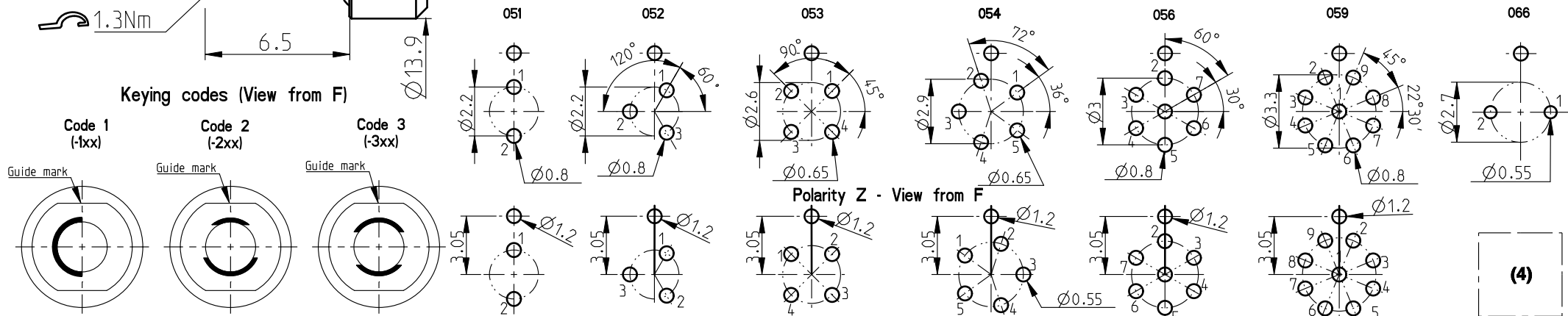


PCB (-x30/-x40)



CONTACT CONFIGURATION	Contacts	Solder cup $\phi$	C	PIN $\phi$
102 A Z 051	2	0.79	11.4 11.6	0.63
102 A Z 052	3	0.79	11.4 11.6	0.63
102 A Z 053	4	0.79	11.4 11.3	0.50
102 A Z 054	5	0.79	11.4 11.3	0.50 0.40
102 A Z 056	7	0.43	10.9 11.1	0.63
102 A Z 059	9	0.43	10.9	0.63
102 A Z 066	2	0.88	11.4	0.4

Pin layout / PCB hole pattern for polarity A - View from F (3)



All dimensions in mm

Rev. 4

Pages 1/1

Notes:  
 1) All tolerances resulting from connector assembly are typically  $\pm 0.3$ mm  
 2) If receptacle is screwed directly into threaded hole, oversize thread by  $+0.05$ mm

3) Recommended PCB hole dimensions may be adjusted to application  
 4) Please contact us  
 Part number example : DBPE 102 A056-130

600473



www.fischerconnectors.com