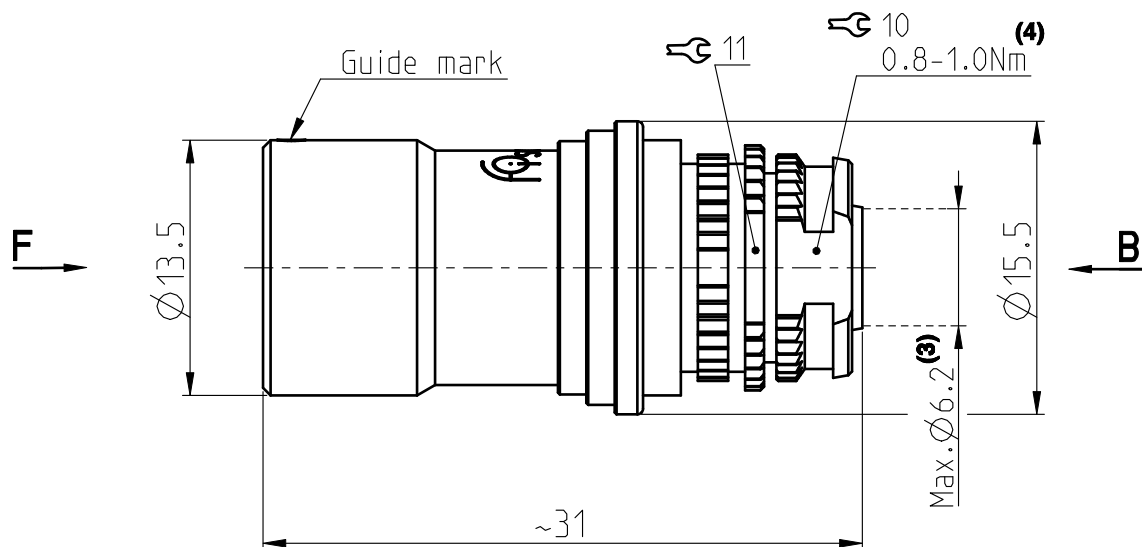
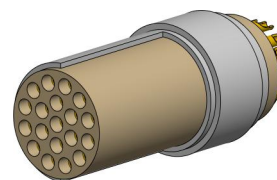


KS/KSE 1031 Multipole Cable Mounted Receptacles

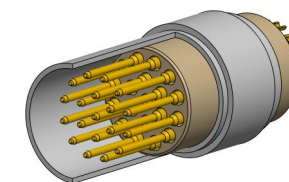
All dimensions see note 1)



Contact polarity A

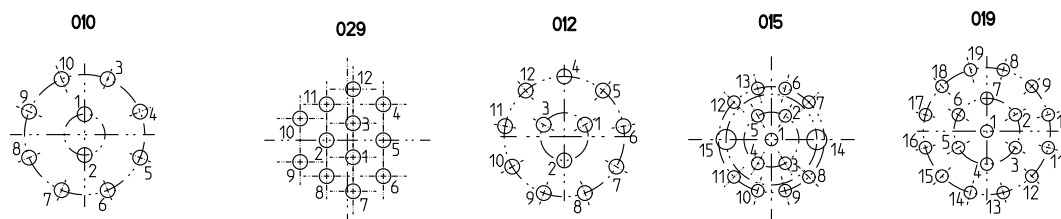


Contact polarity Z

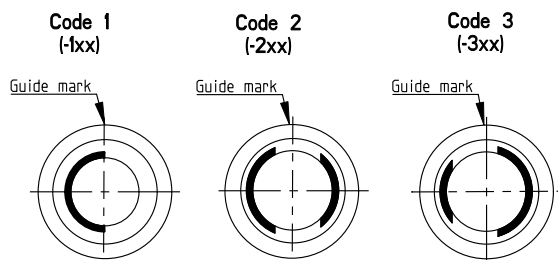


CONTACT CONFIGURATION	Contacts	Solder cup \varnothing		Crimp cup \varnothing ⁽²⁾
1031 A Z 010	10	0.79		0.60
1031 A Z 029	12	0.79		-
1031 A Z 012	12	0.79		0.60
1031 A Z 015	15	0.43/1.18		-
1031 A Z 019	19	0.43		0.43

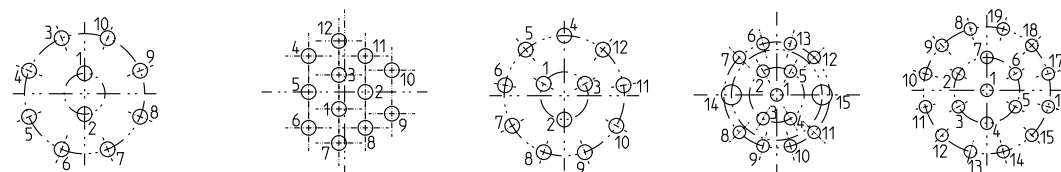
Contact configuration for polarity A (View from B)



Keying codes (View from F)



Contact configuration for polarity Z (View from B)



All dimensions in mm

600519

Rev.

3

Pages

1/1

Notes :

- 1) All tolerances resulting from connector assembly are typically ± 0.3 mm
 - 2) For optimum crimping refer to available crimping manual.
 - 3) Max cable diameter below shield.
- Part number example : KSE 1031 A019-130

4) This torque is a recommended value that may be influenced by the characteristics of the cable. Tests have to be made to evaluate the exact value. To secure the back nut, we recommend the use of thread locking adhesive.

fischer
CONNECTORS

www.fischerconnectors.com